



JOHN GEORGE

Delivering Performance Since 1725

johngeorge.co.uk
sales@johngeorge.co.uk

Wholesale distributors to merchants
in the building, roofing, fencing and agricultural trades

Polyester Resin

John George high performance, rapid curing two part chemical injection anchoring system.

Applied in one single action, this resin will produce a chemical resistant fixing.

Developed principally to anchor threaded rods into concrete, and for masonry and hollow wall applications.

- For use in hollow wall, brickwork, masonry & concrete
- Economical fixing resin
- Medium duty load applications
- Fast curing in normal conditions (including outdoors)
- Vertical/horizontal crack and gap filling repairs
- Available sizes 300ml and 410ml (comes with one nozzle but extra nozzles are available to purchase)

Typical Tensile Performance - Standard Embedment Depth

Concrete, C20/C25, 5.8 Grade Studding						
Size	Recommended Load		Spacing (S _{cr,N})	Drill Hole Ø	Fixing Hole Ø	Setting Depth
	Tension (N _{rec})	Shear (V _{rec})	(mm)	(mm)	(mm)	(mm)
M8	9.07	5.14	160	10	9	80
M10	8.22	8.57	200	12	12	90
M12	11.34	12.00	240	14	14	110
M16	16.30	22.29	320	18	18	125
M20	25.73	34.86	400	24	22	170
M24	32.16	50.29	450	28	26	210
M30	44.53	81.43	520	35	32	280

Working & Hardening Times

Base Material Temperature	- 10°C	- 5°C	5°C	15°C	25°C	35°C
Gel Working Time	50'	40'	20'	9'	5'	3'
Curing Time Dry Concrete	240'	180'	90'	60'	30'	20'
Curing Time Wet Concrete	X 2	X 2	X 2	X 2	X 2	X 2



Product Information

This product should be stored between +5oC & +25oC. Avoid direct sunlight. The shelf life of the product is 18 months from the manufacture date.





JOHN GEORGE

Delivering Performance Since 1725

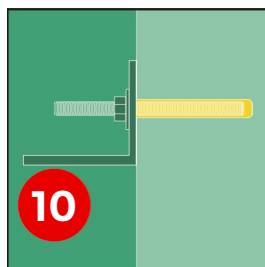
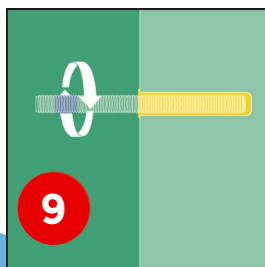
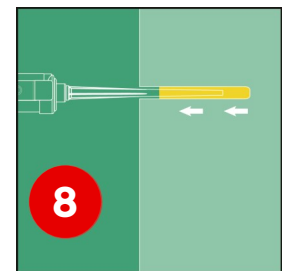
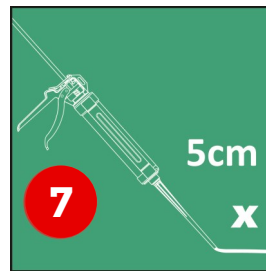
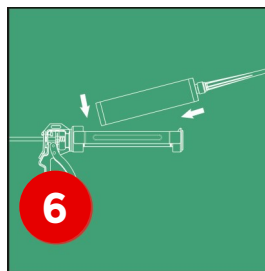
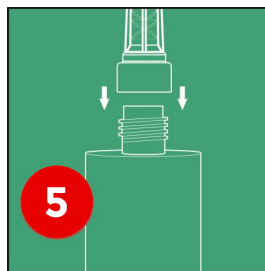
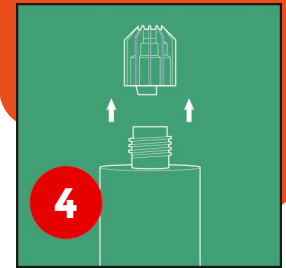
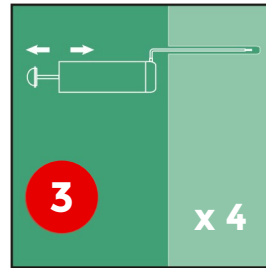
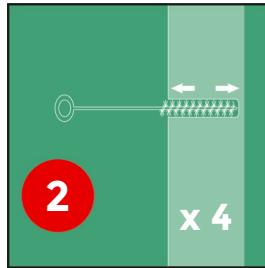
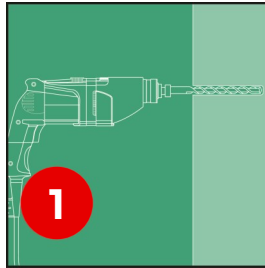
johngeorge.co.uk
sales@johngeorge.co.uk

Wholesale distributors to merchants
in the building, roofing, fencing and agricultural trades

Product Installation

Polyester Resin

Solid Substrates

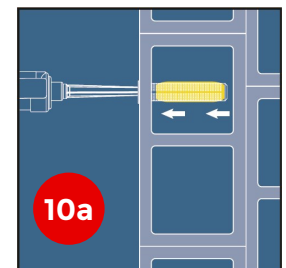
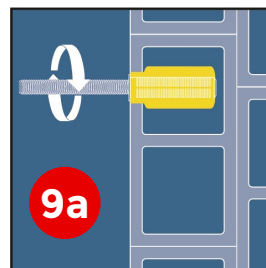
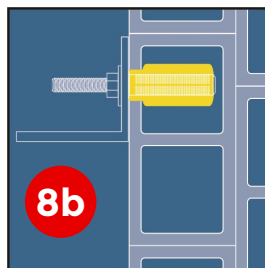
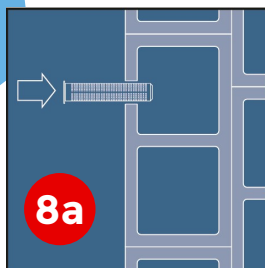


The information and data given is based on our manufacturers' experience, research and testing and is believed to be reliable and accurate. However, as John George cannot know the varied uses to which its products may be applied, or the methods of application used, no warranty as to the fitness or suitability of its products is given or implied. It is the users responsibility to determine suitability of use.

Additional mixer nozzles are required for more than one time use.

For further information please contact our Technical Department - technicalsupport@johngeorge.co.uk.

Hollow Wall Substrates



Our Range

Code	Product	Pack Desc	Capacity	Gun Type	Pack Qty
MCIPR300	Polyester Resin	Box	300ml	Standard C3/C4	12
MCIPR410	Polyester Resin	Box	410ml	MCIG380	12
MCIMN	Spare Mixer Nozzles	Bag	Fits All	-	10
MCIG380	Applicator Gun	-	For 410ml	-	1