



JOHN GEORGE

Delivering Performance Since 1725

johngeorge.co.uk
sales@johngeorge.co.uk

Wholesale distributors to merchants
in the building, roofing, fencing and agricultural trades

Product Information

Combination Cavity Sleeve

Designed to fit to the back of a combination airbrick.

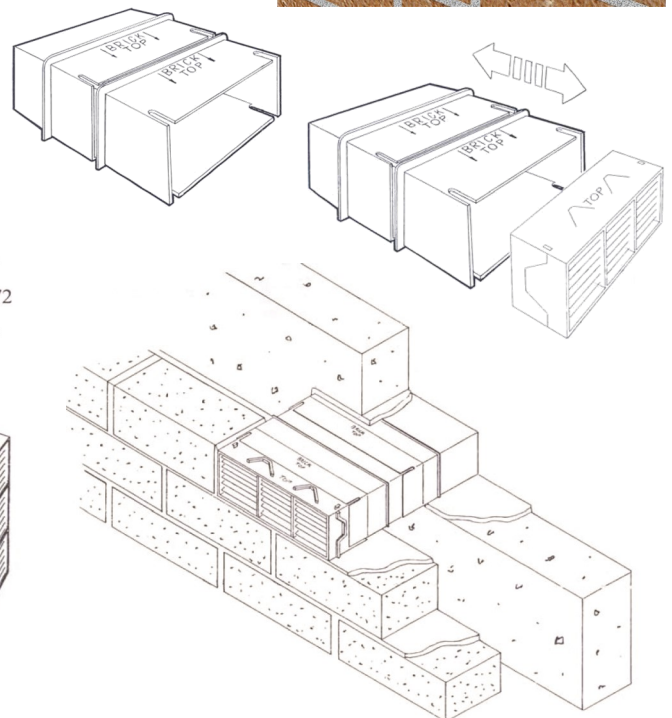
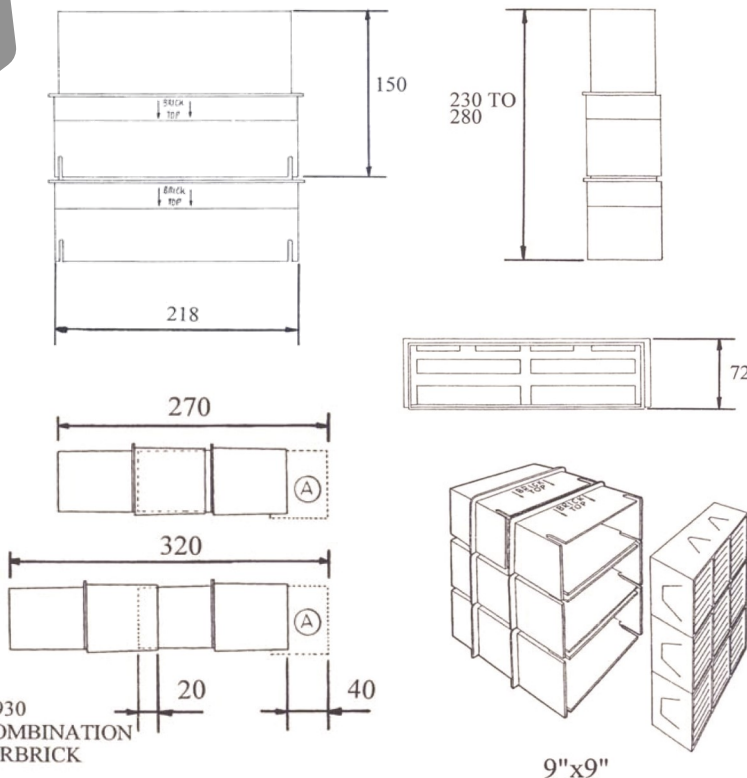
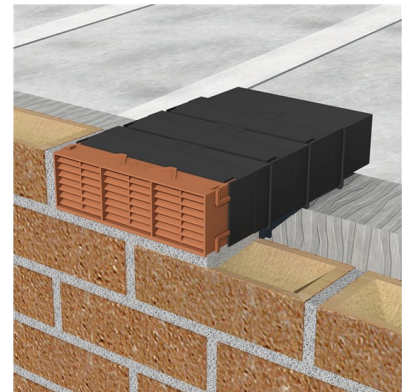
The cavity sleeve can fit to the back of a 9" x3" airbrick or alternatively it can be stacked to form 9" x 6" or 9" x 9" formations.

A telescopic ability enables the cavity sleeve to adjust to fit widths of 50mm to 100mm. Further horizontal extension is possible with the addition of extra units.



Installation

1. Fit to the back of a combination airbrick and adjust to fit the desired cavity width.
2. Can be used in any combination required and built into the crick course as normal although care should be taken to keep the airflow package clear from mortar droppings.
3. Should be used in conjunction with a combination airbrick.



G930
COMBINATION
AIRBRICK

9" x 9"

WEST:

Tel: 01275 335810 Fax: 01275 349203

CENTRAL:

Tel: 0118 941 1234 Fax: 0118 945 1059

EAST:

Tel: 01268 663130 Fax: 01268 663131